

# ANALYSIS OF SACCHARIDES BY HILIC USING TSKgel® nH2-COLUMNS

#412

## INTRODUCTION

Saccharides are fundamental substances that express various bioactivities and may exist independently or form complexes with proteins or lipids. They can be classified into mono-saccharides, disaccharides, oligosaccharides, polysaccharides etc., based upon the degrees of polymerization and condensation. Sugar alcohols are a class of polyols. A polyol is an alcohol containing multiple hydroxyl groups. Sugar alcohols are commonly added to foods since they are of lower caloric content than the corresponding sugars. The analysis of saccharides and sugar alcohols provides valuable information for the medical research, food industries and regulatory agencies.

In the past various analytical techniques have been used to analyse saccharides, including all modes of high performance liquid chromatography (HPLC). Normal phase chromatography, in tandem with a differential refractometer as a detector, has long been used for the analysis of saccharides, as it provides good selectivity with relatively short analysis times. Hydrophilic interaction liquid chromatography (HILIC) selectively retains saccharides and polyhydric alcohols, such as sugar alcohols, while most of the substances with low polarity, as well as monohydric alcohols, elute in or very close to the void volume of the column.

We report the successful analysis of different kinds of saccharides and sugar alcohols using a TSKgel NH2-100 HILIC HPLC column. TSKgel NH2-100 columns are packed with 3 µm silica particles containing 100 Å pores. A novel bonding strategy was adopted to improve chemical stability of the bonded phase. First the silica is reacted with a trimethylsilane endcapping reagent at a low stoichiometric ratio, before reacting residual and accessible silanol groups with tri-functional alkylaminosilane reagent.

## STRUCTURE OF TSKgel NH2-100

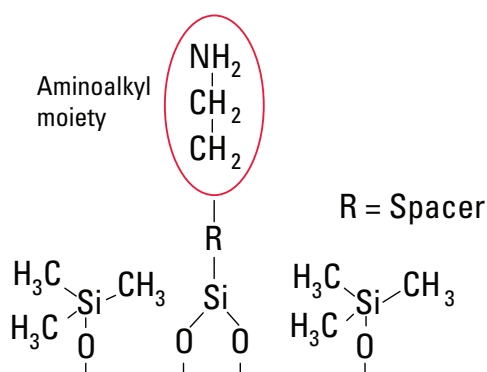


Figure 1

The resulting bonded phase provides a better safeguard against hydrolysis of the underlying silica. TSKgel NH2-100 columns are unique in that the bonded phase ligand not only, as expected, has a terminal primary amino group, but that the spacer also incorporates secondary as well as tertiary amino groups (see Figure 1). TSKgel NH2-100 columns are well suited for the analysis of all types of hydrophilic compounds, including saccharides and sugar alcohols.

## EXPERIMENTAL CONDITIONS

LC System: HP-1100 HPLC with Chemstation (ver B.03.01)  
 Column: TSKgel NH2-100, 3 µm, 2.0 mm ID x 5 cm L  
 Mobile phase (Isocratic): 80% ACN in H<sub>2</sub>O  
 Flow rate: 0.2 mL/min; Detection: RI  
 Temperature: 50°C; Injection vol.: 2 µL

The following commercially available compounds were used to prepare standard solutions: Sucrose (Fisher S2-500); Mannitol (Sigma M-4125, Lot 22K0111)

## PREPARATION OF STANDARDS

Saccharides	Weight	Stock Standard (mg/mL)
Sucrose	0.1023 g in 10 mL of 50% ACN in H <sub>2</sub> O	10.23

Polyols*	Weight	Stock Standard (mg/mL)	Working Standard (mg/mL)
Mannitol	0.1011 g in 10 mL of 50% ACN in H <sub>2</sub> O	10.11	Same as stock

\* Mannitol was readily soluble in 50% ACN in water.

Table 1

## ANALYSIS OF SUCROSE STANDARD

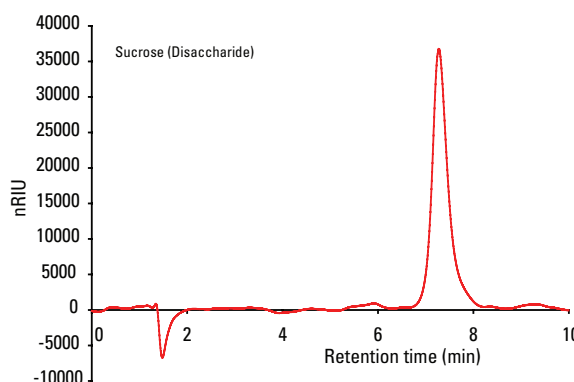


Figure 2

Column: TSKgel NH2-100, 3 µm, 2.0 mm ID x 5 cm L  
 Mobile phase: 80% ACN in H<sub>2</sub>O; Flow rate: 0.2 mL/min  
 Detection: RI; Temperature: 50°C; Injection Vol.: 2 µL

All the standards and samples were filtered through a 0.45  $\mu\text{m}$  PVDF filter (Gelman) before injecting onto the column. High purity chemicals and HPLC grade solvents were used for the preparation of stock standards, samples and mobile phases.

## RESULTS AND DISCUSSION

The symmetry and efficiency of the eluted sucrose standard, a disaccharide, from the TSKgel NH2-100 column is shown in Figure 2.

### SYSTEM SUITABILITY STUDY RESULTS - SUCROSE ANALYSIS

#### Sucrose

Run	RT	k	Area	AF	N
1	7.275	10.58	0.863	1.40	2732
2	7.280	10.59	1.070	1.40	2408
3	7.277	10.59	0.842	1.40	2734
<b>Average</b>	7.277	10.59	0.925	1.40	2625
<b>Stdev</b>	0.003	0.01	0.126	0.01	187.6
<b>%RSD</b>	0.03%	0.05%	13.6%	0.71%	7.1%

Table 2

### ANALYSIS OF MANNITOL STANDARD

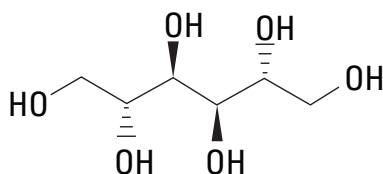
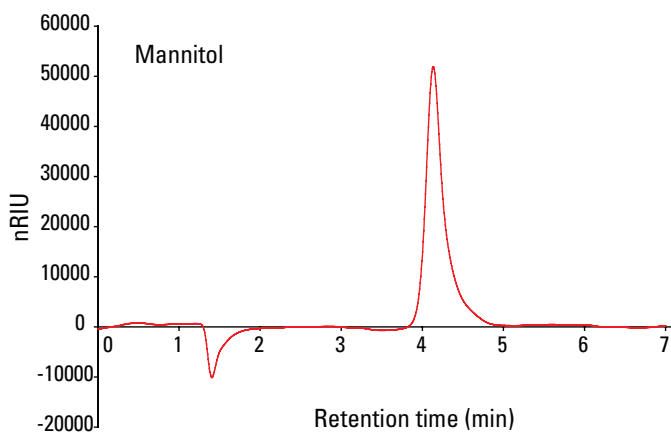


Figure 3

Column: TSKgel NH2-100, 3  $\mu\text{m}$ , 2.0 mm ID x 5 cm L  
 Mobile phase: 80% ACN in  $\text{H}_2\text{O}$ ; Flow rate: 0.2 mL/min  
 Detection: RI; Temperature: 50°C; Injection vol.: 2  $\mu\text{L}$

To determine the suitability of the system and method, three consecutive injections of sucrose were loaded onto the TSKgel NH2-100 column. The study yielded a very consistent result across all peak parameters (see Table 2). This column shows very high reproducibility for the analysis of sucrose.

Mannitol, a sugar alcohol, was successfully analyzed on a TSKgel NH2-100 column within five minutes (Figure 3). As in the case of sucrose, the analysis of mannitol could be reproduced with a high degree of consistency (Table 3).

### SYSTEM SUITABILITY STUDY RESULTS - MANNITOL ANALYSIS

#### Mannitol

Run	RT	k	Area	AF	N
1	4.135	5.58	0.829	1.58	2124
2	4.135	5.58	0.923	1.63	2030
3	4.131	5.58	0.950	1.58	2027
4	4.134	5.58	0.915	1.69	2029
5	4.133	5.58	0.886	1.66	2028
<b>Average</b>	4.134	5.580	0.901	1.63	2048
<b>Stdev</b>	0.002	0.01	0.046	0.049	42.72
<b>%RSD</b>	0.04%	0.18%	5.12%	2.99%	2.09%

Table 3

## CONCLUSIONS

This study shows that a TSKgel NH2-100 column is suitable for the analysis of sucrose, a disaccharide, and mannitol, a sugar alcohol. Both standards separated on this column with good symmetry and efficiency. System suitability studies show that the analyses of sucrose and mannitol can be reproduced with very low % RSD in peak parameters using the TSKgel NH2-100 column.

Tosoh Bioscience and TSKgel are registered trademarks of Tosoh Corporation.

### Headquarters

JSB International  
Tramstraat 15  
5611 CM Eindhoven  
T +31 (0) 40 251 47 53  
F +31 (0) 40 251 47 58

Zoex Europe  
Tramstraat 15  
5611 CM Eindhoven  
T +31 (0) 40 257 39 72  
F +31 (0) 40 251 47 58

### Sales and Service

Netherlands  
Apolloweg 2B  
8239 DA Lelystad  
T +31 (0) 320 87 00 18  
F +31 (0) 320 87 00 19

Belgium  
Grensstraat 7  
Box 3 1831 Diegem  
T +32 (0) 2 721 92 11  
F +32 (0) 2 720 76 22

Germany  
Max-Planck-Strasse 4  
D-47475 Kamp-Lintfort  
T +49 (0) 28 42 9280 799  
F +49 (0) 28 42 9732 638

UK & Ireland  
Cedar Court,  
Grove Park Business Est.  
White Waltham, Maidenhead  
Berks, SL6 3LW  
T +44 (0) 16 288 220 48  
F +44 (0) 70 394 006 78

[info@go-jsb.com](mailto:info@go-jsb.com)  
[www.go-jsb.com](http://www.go-jsb.com)



With courtesy of **TOSOH**

