

Calibration Curves for PFPH Formaldehyde Hydrazone using Thermal Desorption

To make the derivatizing reagent, 1000 nMoles of pentafluorophenyl hydrazine (Aldrich 156388) was added to a 500 ml volumetric flask and dissolved in a suitable amount of anhydrous methanol. Slight sonication may be necessary to insure complete dissolution. The standard solution was prepared by adding 10 milligrams of 37% formaldehyde solution (Aldrich 252549) to a 100ml volumetric flask, which is then brought to volume with the methanolic PFPH. The flask should be allowed to stand undisturbed for at least 2 hours. The 100 ml volumetric contains 100 µg of formaldehyde per ml. Standard 6 mm thermal desorption tubes packed with Tenax were quantitatively loaded with a series of concentrations ranging from 10 µg to 50 µg (in 10 µg increments) and a series from 2 µg to 10 µg (in 2 µg increments) respectively, using a Dynatherm Model 60 Tube conditioner with spiking station. The samples were then thermally desorbed using the CDS 9300 Autosampler, which was interfaced to a gas chromatograph/mass spectrometer. The PFPH formaldehyde hydrazone derivative is detected using single ion monitoring for the unique molecular ion m/e 210.

Figure 1 is a calibration curve of 10 µg to 50 µg of the formaldehyde hydrazone derivative. The R^2 for this linearity plot is 0.97. Figure 2 is a plot of percent carryover of the formaldehyde hydrazone derivative from this analysis. Note that carryover is less than 1% at all concentration levels. Figure 3 is a linearity plot of the 2 µg to 10 µg level. The R^2 for this plot is 0.98.

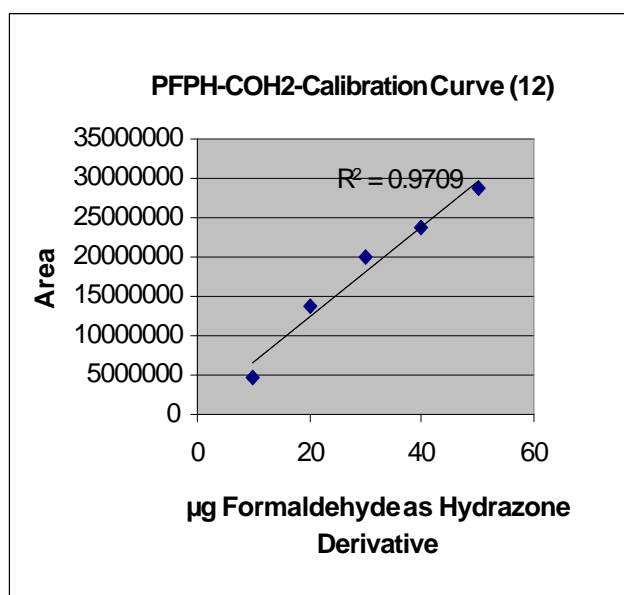


Figure 1.

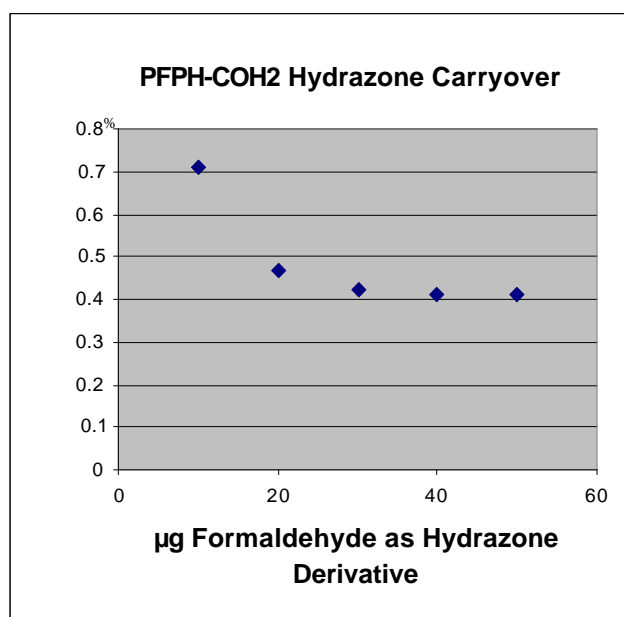


Figure 2.

CDS 9300 TDA Conditions:

Valve Oven: 300°C
Transfer Line: 300°C

Tube Idle: 40°C
Dry Tube: 40°C 0.00 Minutes
Tube Heat: 300°C 15.00 Minutes
Tube Cool: 0.00 Minutes

Trap Idle: 40°C
Trap Heat: 300°C 10.00 Minutes

Interconnect Line: 300°C

Sample Saver Idle: 45°C
Sample Saver Heat: 0°C 0.00 Minutes

GC Conditions:

Column: CP Select 624, 30mm x 0.25mm x 1.4µm

GC Program:
40°C for 4 Min,
7°C/min to 100°C,
8°C/min to 225°C, 2 min hold

Column Flow: 1ml/min
Split: 200
Solvent Delay: 19.50 Minutes

Mass Spectrometer:

Ion trap
Mode: Single Ion Selection (m/e 210)

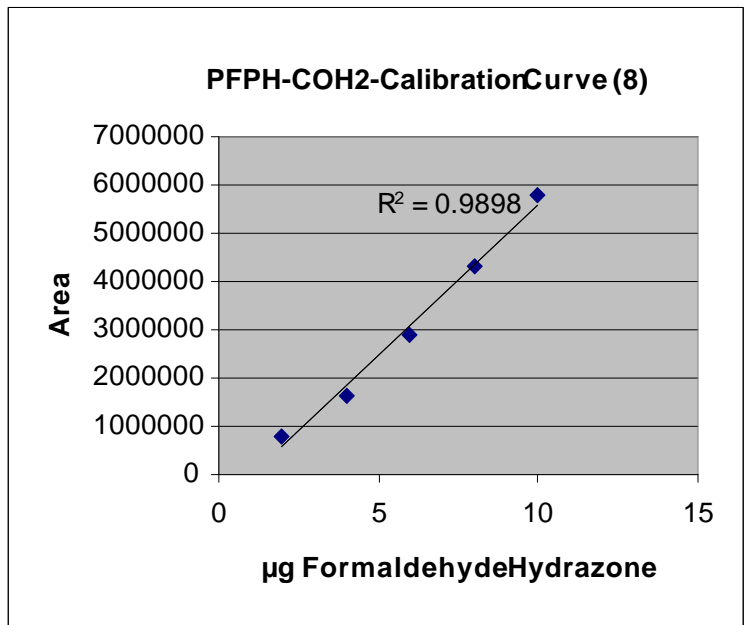


Figure 3.

Further Information:

HO and YU, Environ. Sci Technol, 2004, 38, 862-870.

© courtesy of CDS Analytical Inc.

Headquarters

JSB International
Tramstraat 15
5611 CM Eindhoven
T +31 (0) 40 251 47 53
F +31 (0) 40 251 47 58

Zoex Europe
Tramstraat 15
5611 CM Eindhoven
T +31 (0) 40 257 39 72
F +31 (0) 40 251 47 58

Sales and Service

Netherlands
Apolloweg 2B
8239 DA Lelystad
T +31 (0) 320 87 00 18
F +31 (0) 320 87 00 18

Belgium
Grensstraat 7
Box 3 1831 Diegem
T +32 (0) 2 721 92 11
F +32 (0) 2 720 76 22

Germany
Max-Planck-Strasse 4
D-47475 Kamp-Lintfort
T +49 (0) 28 42 9280 799
F +49 (0) 28 42 9732 638

UK & Ireland
Cedar Court,
Grove Park Business Est.
White Waltham, Maidenhead
Berks, SL6 3LW
T +44 (0) 16 288 220 48
F +44 (0) 70 394 006 78

info@go-jsb.com
www.go-jsb.com

