

Purge & Trap using the 7300 Auto-Sampler

Water samples containing fifteen compounds ranging from Bromochloromethane to Naphthalene, were assayed using the CDS 7300 Auto-sampling system, including a Model 7000 Purge & Trap. Samples at concentrations from 10 to 100 PPB were prepared in standard 40 ml auto-sampler vials, which were placed into the sampling tray of the 7300. The auto-sampler system has the capacity to handle up to 72 vials. The 7300 transferred 5 ml samples to the purging vessel of the 7000, adding the internal standard. The water was then purged for 11 minutes at 35 ml/min to a Vocarb trap.

After purging, the vessel is emptied and automatically rinsed before the next sample is delivered. The system may be programmed to perform up to four runs per vial, with up to four rinses after draining. The 7300 also performs up to nine blank runs per vial with the number set individually for each vial, and the blank runs performed before the sample runs.

Figure 1 shows a chromatogram of a 50 PPB sample containing the compounds listed in Table 1 on the back. Linearity plots for several of the compounds (ranging from Dichlorobromomethane to Hexachlorobutadiene) from 10 to 100 PPB are shown in Figure 2. These graphs show excellent linearity, with R-squared values from 0.994 to 0.999.

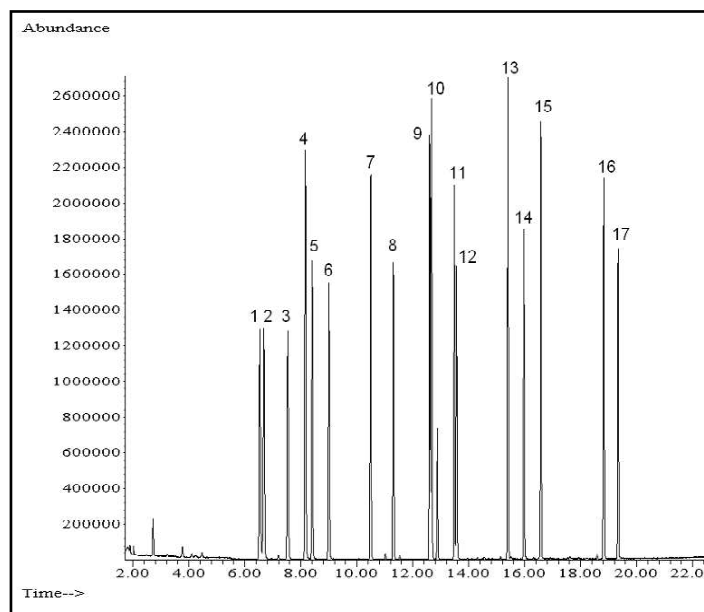


Figure 1. Volatiles (50PPB) in 5 ml water.

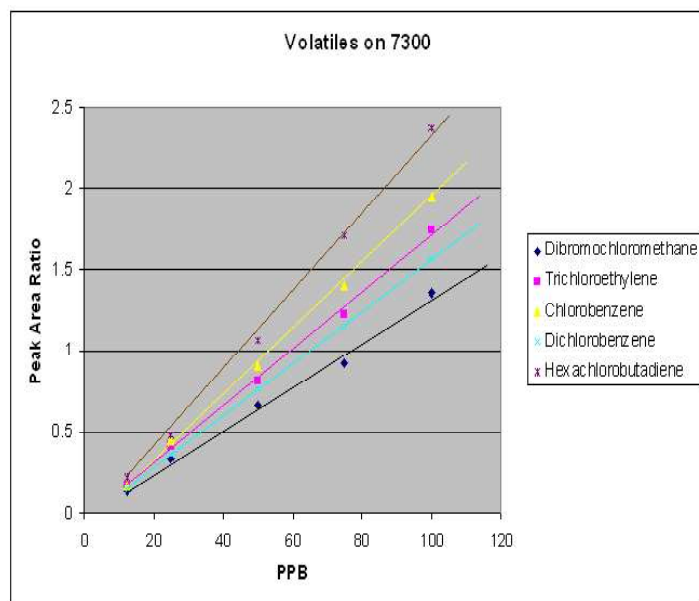


Figure 2. Linearity for five compounds.

Experimental Conditions

7000 P&T

Valve oven:	130°C
Transfer line:	130°C
Purge time:	11 minutes
Purge flow:	35 ml/min
Trap dry	35°C for 1 minute
Desorb preheat:	245°C for 0.6 minutes
Trap desorb:	250°C for 2 minutes
Trap bake:	260°C for 10 minutes

Gas Chromatograph

Injection port:	300°C
Split ratio:	20:1
Column:	30 m x 0.25 mm 5% phenyl methylsilicone

Oven program

Initial:	40°C for 4 minutes
Ramp:	10°C/minute
Final:	210°C for 1 minute

Mass Spectrometer

Mass range:	35 to 550
Source:	230°C

Table 1

Peak No	Compound
1	Bromochloromethane
2	Chloroform
3	Benzene
4	Fluorobenzene (IS)
5	Trichloroethylene
6	Dibromomethane
7	Toluene
8	Trichloroethane
9	Chlorobenzene
10	Ethylbenzene
11	o-Xylene
12	Bromoform
13	Trimethylbenzene
14	Dichlorobenzene
15	Dichlorobenzene - d4 (IS)
16	Hexachlorobutadiene
17	Naphthalene

© courtesy of CDS Analytical Inc.

Headquarters

JSB International
Tramstraat 15
5611 CM Eindhoven
T +31 (0) 40 251 47 53
F +31 (0) 40 251 47 58

Zoex Europe
Tramstraat 15
5611 CM Eindhoven
T +31 (0) 40 257 39 72
F +31 (0) 40 251 47 58

Sales and Service

Netherlands
Apolloweg 2B
8239 DA Lelystad
T +31 (0) 320 87 00 18
F +31 (0) 320 87 00 19

Belgium
Grensstraat 7
Box 3 1831 Diegem
T +32 (0) 2 721 92 11
F +32 (0) 2 720 76 22

Germany
Max-Planck-Strasse 4
D-47475 Kamp-Lintfort
T +49 (0) 28 42 9280 799
F +49 (0) 28 42 9732 638

UK & Ireland
Cedar Court,
Grove Park Business Est.
White Waltham, Maidenhead
Berks, SL6 3LW
T +44 (0) 16 288 220 48
F +44 (0) 70 394 006 78

info@go-jsb.com
www.go-jsb.com

